

Customer :

customer

Customer part :

customer part

Comment :

Comment

S1=0.1

S2=0.17

Tmax=334

Tp S2=373.0

PI=0.37

HI=11

Sample =12046.5

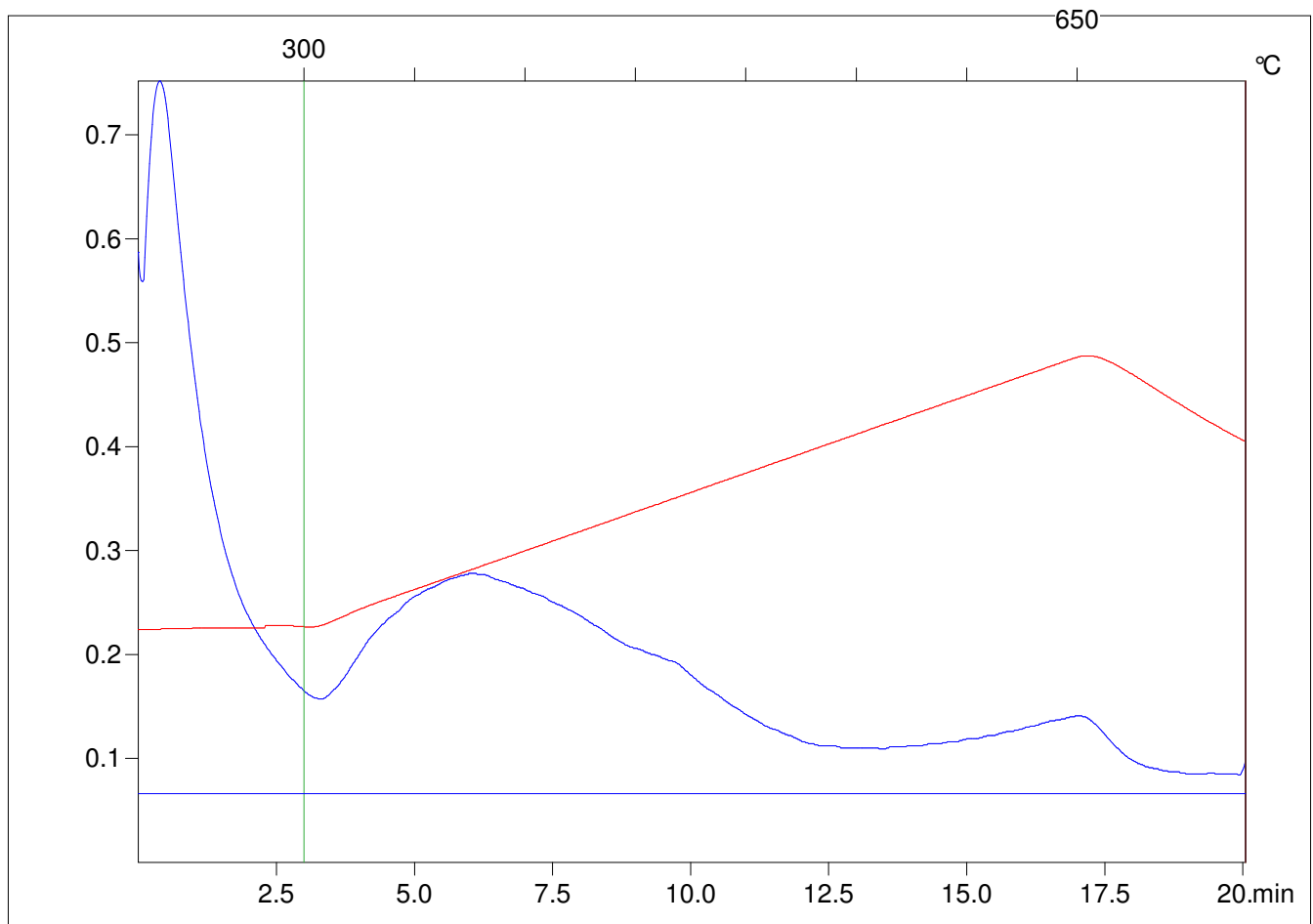
Method =Bulk Rock

Cycle=Basic

KFID(10*9)=1167

Qty =70.4

TOC=1.56



C:\VINC\PK141015\PK067.R00 : FID pyrolysis graphic

State

Pyro Status

Oxi Status